

Self-expanding Metal Stents in Malignant Obstruction of the Esophagus: A 25-Year Multicentric Study

Rodrigo Castaño,^{1-2*} Jorge Lopera,³ Ricardo Jaramillo,⁴ Luis José Palacios,⁴ Mauricio Rodríguez,⁴ Diego Caycedo,⁵ Esteban Isaza,⁵ Santiago Salazar,⁶ Camilo Vásquez,⁷ Juan Esteban Puerta,⁸ Isabella Cadavid,⁸ Óscar Álvarez.⁹

OPEN ACCESS

Citation:

Castaño R, Lopera J, Jaramillo R, Palacios LJ, Rodríguez M, Caycedo D, Isaza E, Salazar S, Vásquez C, Puerta JE, Cadavid I, Álvarez O. Self-expanding Metal Stents in Malignant Obstruction of the Esophagus: A 25-Year Multicentric Study. *Revista. colomb. Gastroenterol.* 2023;38(4):448-459. <https://doi.org/10.22516/25007440.1064>

¹ Gastrointestinal surgery and endoscopy. Professor of the Gastrohepatology Group, Universidad de Antioquia. Medellín, Colombia.

² Instituto de Cancerología Clínica las Américas, AUNA. Medellín, Colombia.

³ Interventional radiologist. Professor of Radiology, University of Texas. San Antonio, United States.

⁴ Oncologist surgeon, Instituto de Cancerología Clínica las Américas, AUNA. Medellín, Colombia.

⁵ General surgeon, Instituto de Cancerología Clínica las Américas, AUNA. Medellín, Colombia.

⁶ Surgery resident, Universidad Pontificia Bolivariana. Medellín, Colombia.

⁷ Surgery resident, Universidad CES. Medellín, Colombia.

⁸ Intern, Universidad CES. Medellín, Colombia.

⁹ Gastroenterologist, internist, radiologist. Interventional endoscopy, Texas Digestive Specialists. McAllen, United States.

*Correspondence: Rodrigo Castaño.
rcastanoll@hotmail.com

Received: 29/03/2023

Accepted: 01/06/2023



Abstract

Background: Self-expanding metal prostheses improve dysphagia in patients with incurable esophageal cancer (EC). New stents have been introduced, and chemoradiotherapy has been implemented for EC, changing patients' risk profiles. It is unknown whether this has affected palliation with stents. **Patients and methods:** Retrospective study in three centers in Medellín-Colombia; patients undergoing placement of palliative esophageal prostheses for malignant dysphagia (1997-2022). Major and minor complications after implantation, the influence of oncological therapies, and survival were evaluated for 1997-2009 (n = 289) and 2010-2022 (n = 318). **Results:** 607 patients underwent esophageal prostheses; 296 (48.8%) became complicated. It was higher in the second period (52.5% vs. 48.1%), as were major complications (20.8% vs. 14.2%, $p = 0.033$), with no differences in minor complications (33.9% vs 31.8%, $p = 0.765$). Also, 190 (31.3%) patients presented with recurrent dysphagia, stable in both periods. Migration increased over time (from 13.1% to 18.2%, $p = 0.09$). The most common minor adverse event was pain, increasing over time (from 24.9% to 33.95%, $p < 0.01$), and associated factors were chemoradiotherapy, absence of fistula, and squamous cell carcinoma. Acid reflux decreased in the second group ($p = 0.038$). Twelve percent of patients required another intervention for feeding. Survival was not impacted by time and use of stents. **Conclusions:** Stents are an alternative in non-surgical malignant dysphagia, although recurrent dysphagia has not decreased over time. Minor stent-related complications are increasing in association with the implementation of chemoradiotherapy.

Keywords

Esophageal cancer, metal stent, dysphagia, palliation.

INTRODUCTION

Annually, approximately 600,000 people are diagnosed with esophageal cancer worldwide⁽¹⁾. More than half of patients present with inoperable disease at the time of diagnosis due to metastases or a poor medical condition. Dysphagia is a common symptom that dramatically impacts the patient's

quality of life⁽²⁾. Although brachytherapy is superior in achieving long-term relief of dysphagia, esophageal stenting induces a more rapid resolution⁽³⁾. Therefore, it is currently accepted that the placement of an esophageal prosthesis is indicated mainly in patients with short-term survival⁽⁴⁾.

The first description of the clinical use of esophageal prostheses is attributed to Celestin, who collected previous

experiences and results with the use of plastic esophageal prostheses to treat malignant dysphagia⁽⁵⁾. In Colombia, the first publication on the clinical use of plastic and rigid prostheses in the esophagus dates back 35 years by the group of the National Cancer Institute⁽⁶⁾. The first publication in the field using self-expanding metal prostheses is from 20 years ago, with the advantage of being locally built prostheses⁽⁷⁾. Currently, esophageal stenting is used for a wide variety of esophageal diseases. Various stent designs with different characteristics are available for clinical use. The attributes of esophageal stents vary depending on mechanical properties, such as the material (metal, plastic, or biodegradable), the radial and axial forces acting on the lumen of the esophagus, and the type and design of the cover (partial, total, or uncovered) surrounding the mesh of the prosthesis (silicone, polyurethane, among others). The implications of different stent characteristics on clinical outcomes have not been fully elucidated due to a lack of results from randomized, controlled clinical studies⁽⁸⁾.

While esophageal prostheses can effectively restore luminal patency, they are not complication-free. Minor complications of esophageal stenting include chest pain, acid reflux, stent obstruction from tissue growth or poor diet, recurrent dysphagia, and stent migration. Moreover, the major adverse effects are bleeding, aspiration pneumonia, and perforation. These adverse effects may require repeating the endoscopy with possible stent removal⁽⁹⁾. Our experience with esophageal prostheses has been previously described, and we demonstrated that esophageal stents can improve dysphagia but do so imperfectly, with high complication rates (29.4% of patients experienced at least one minor complication)^(10,11). Several prostheses have been designed to minimize these risks in recent decades, with different materials, shapes, sizes, biodegradability, types, extent of coating, and anti-reflux, anti-migration, or even radioactive characteristics⁽¹²⁻¹⁶⁾. Still, whether these technical developments have positively impacted clinical outcomes remains uncertain.

The profile of patients selected for treatment with stents has changed with variations in the treatment of esophageal cancer (chemoradiotherapy). Patients who underwent esophageal stenting for the management of malignant dysphagia over the past 25 years were analyzed for dysphagia recurrence in two periods, describing other related adverse events with stents and survival in these two periods.

MATERIALS AND METHODS

Study population

We included patients who underwent placement of a self-expanding metal esophageal prosthesis between January

1997 and May 2022 with palliative intent for malignant dysphagia due to esophageal or cardia obstruction, treated in four quaternary care institutions in Medellín attending cancer cases. Patients with a malignant stricture at the anastomosis after partial esophagectomy or gastrectomy with or without concomitant fistula were also included.

Eligible subjects were identified from the institutions' database, reviewing endoscopy records and clinical studies from the four oncology institutions. Patients who received a self-expanding plastic stent were excluded.

Placement of the esophageal prosthesis

Different stents were placed during the study according to their historical evolution (steel, Z stents, nitinol). Still, the analysis was limited to evaluating whether the prosthesis was totally or partially covered due to inconsistencies in the description in the endoscopic report. The location, grade of stricture, and path were determined essentially by endoscopy and esophagram. The stent chosen depended on the center's availability and the doctor's discretion. Stenting was performed with the patient under conscious sedation. The lesion was inspected and explored with a standard endoscope when allowed by the diameter. If the stricture could not be crossed, the option was NOT to dilate and pass a guidewire. The esophageal location of the tumor was defined using the distance of the incisors from the upper margin of the tumor. It was subdivided into proximal (up to 22 cm), middle (22 to 28 cm), and distal (below 28 cm).

The stents were inserted over a guidewire and most frequently placed with no fluoroscopic but endoscopic control. The length of the esophageal prosthesis was determined considering the size of the stricture plus 4 cm, a minimum of 2 cm at each end above and below the tumor.

The fluoroscopy offers the option of having the path and length of the stricture better characterized to choose the size of the stent, but this choice was at the operator's discretion.

Generally, patients received a liquid diet the same day after the procedure. They also received detailed feeding instructions at the time of hospital discharge.

Objectives and data collection

The primary objective was to determine the clinical efficacy and safety of esophageal prosthesis placement regarding relief and recurrence of dysphagia and diachronically evaluate occurrence changes. The secondary objective was to identify risk factors for recurrent dysphagia and stent-related adverse events, clinical and technical success rate, dysphagia improvement, and survival.

The patient's medical records and endoscopy reports were reviewed, extracting the following data: age, sex,

dysphagia score, previous chemotherapy or radiotherapy, location of stricture, histology, date of stenting, type of stent (covered, uncovered, partial), and the use of dilation. Most data were retrospective, although data from prospective studies were also included from the institutions' electronic medical records and the online form (Drive).

Dysphagia was scored according to the Ogilvie scale⁽¹⁷⁾. The following outcome parameters were collected: technical success, complications, recurrent dysphagia, and survival. Technical success was defined as adequate deployment and placement of the stent in the intended position. Repositioning was allowed during the same procedure; however, if a second endoscopy with repositioning of the prosthesis was indicated, it was considered a technical failure.

Recurrent dysphagia was defined as stent migration, growth or overgrowth, occlusion of the alimentary canal, or other stent-related causes confirmed by endoscopy. Major complications involved severe or life-threatening complications, including perforation, hemorrhage, pneumonia, fever, fistula, or pressure necrosis. Minor complications included substernal pain and reflux symptoms. Time to major or minor complications was defined as the number of days from prosthesis placement to the first adverse event. Both complications were included if a minor and a major complication occurred in the same patient.

For evaluation purposes, the study was grouped into two 12-year periods, according to the date of stenting: Group 1 (January 1997 to December 2009) and Group 2 (January 2010 to May 2022). Data were collected until May 2022 to have a minimum follow-up of six months for the latest patients. The distribution into these two groups (first and second half of the series) considered the changes in the therapy approach (chemotherapy and neoadjuvant radiotherapy) given to esophageal cancer in the last ten years.

Statistical analysis

The occurrence of recurrent dysphagia, major and minor complications, and survival were evaluated using the Kaplan-Meier estimate and compared between the two consecutive periods using the log-rank test. Patients were censored at the time of death, after removal of the prosthesis, or at the end of follow-up. Univariate Cox regression analysis was performed to evaluate the association between multiple covariates, including time to prosthesis placement (in years) and the occurrence of recurrent dysphagia, subdivided into migration, tumor or tissue growth, and major and minor complications. Other covariates were age, sex, previous radiation or chemotherapies, fistula presence, stricture location, histology, extrinsic compression, and anterior dilation.

The statistical program SPSS version 22.0 (Chicago, Illinois, United States) was used for data analysis. *P*-values of 0.05 were considered the limit of statistical significance.

Ethical considerations

All procedures conformed to the ethical standards of the committee responsible for human experimentation (institutional and national) and to the 1964 Helsinki Declaration and later versions. The confidentiality of data was protected. The authors state that this article does not contain personal information that could identify patients. Data already analyzed from two studies were compared, which at the time were obtained from a secondary source without any intervention on the patients, so informed consent is not required.

RESULTS

Characteristics of the patients

A total of 668 patients who underwent self-expanding metal esophageal stenting for malignant dysphagia between September 1997 and April 2022 were identified. The flow diagram of the study with the excluded patients is presented in **Figure 1**.

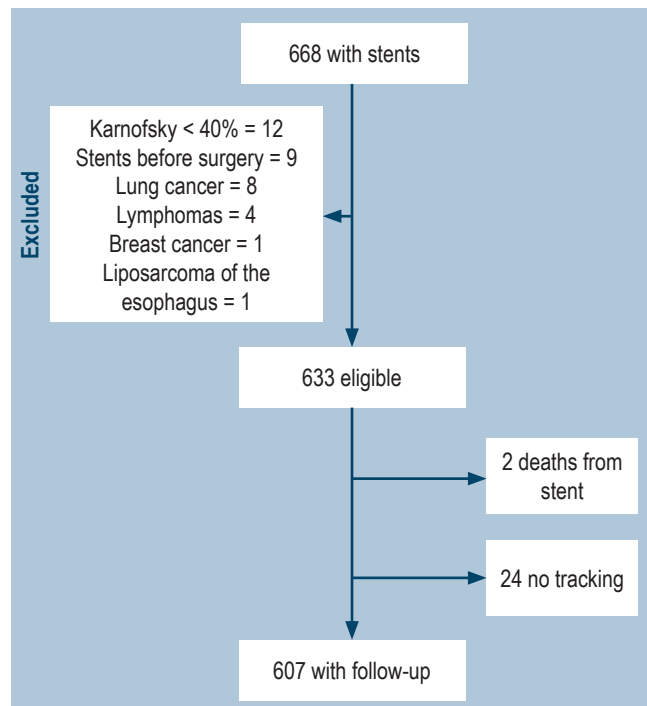


Figure 1. Flow chart with excluded patients. Prepared by the authors.

The calculations were based on 607 patients for whom the most information was available when reviewing the medical records. The clinical characteristics of the patients were discriminated into two temporary care groups: Group 1 ($n = 289$) with stents placed between September 1997 and December 2009, and Group 2 ($n = 318$) between January 2010 and May 2022. No differences were found in the median age or sex distribution in both groups (**Table 1**).

All patients had dysphagia ≥ 2 before prosthesis placement. In the second period (Group 2), 56.3% of patients had been pretreated with chemotherapy or radiotherapy, compared to 39.1% in the previous period ($p < 0.001$). In 49 patients, stenting was indicated for residual or recurrent malignant obstructive disease. The proportion of patients with the more distally located disease (distal esophagus/cardias) increased from 61.9% to 69.8%, with a significant difference ($p = 0.021$). A fully covered stent was inserted 73.1% of the time. The proportion of completely covered prostheses increased in the second period from 66.4% to 79.2% ($p = 0.01$).

Technical aspects and improvement of symptoms

Placement of endoscopic esophageal stents was technically successful in 310 of 318 patients (97%). Technical failure occurred due to incorrect stenting ($n = 6$) and insufficient stent deployment ($n = 2$). No differences in technical success between the two study periods were observed ($p = 0.95$). However, it is evident that in the second period of the study, fluoroscopy assistance was used in a lower proportion (24.6% vs. 15.1%, $p = 0.002$). Dysphagia scores improved from a median of Grade 3 to 0 ($p < 0.001$) four weeks after stenting.

Fistulas in the esophagus

We found an esophageal fistula before stenting in 51 patients (6.7%), an esophageal-respiratory fistula in 29 (4.8%), and a mediastinal fistula in 22 (3.6%) (**Table 1**). In all these patients, the dysphagia score improved (2.81 vs. 1.3, $p < 0.001$). Median survival after stenting of fistulas was 78.1 days (range: 41–232 days).

Recurrent dysphagia

Recurrence of dysphagia occurred in 190 of 607 patients (31.3%) and was related to stent migration (96 patients; 15.8%) with internal or excessive growth of tumor or hyperplastic tissue (75 patients; 12.3%), occlusion of the alimentary tract (14 patients; 2.3%), other stent-related causes (8 patients; 1.3%), and other non-stent-related causes (13 patients; 2.1%) (**Figure 2** and **Table 2**).

Recurrent dysphagia was diagnosed after a median of 44 days (range: 2–679 days). Univariable Cox regression analysis did not demonstrate a trend toward an increase in recurrent dysphagia over the two periods evaluated (hazard ratio [HR]: 1.01 per 1-year increase; 95% confidence interval [CI]: 0.92–1.05; $p = 0.5$). Furthermore, no association was found between previous chemotherapy and recurrent dysphagia (HR: 1.22; 95% CI: 0.91–1.81; $p = 0.4$).

Other adverse events

Almost half of the patients (296; 48.3%) had at least one complication. One hundred seven (17.6%) major complications occurred, including bleeding ($n = 43$), pneumonia ($n = 26$), perforation ($n = 15$), fistula ($n = 14$), and pressure necrosis ($n = 7$) (**Figure 3** and **Table 2**). Major complications developed in a median of 11 days after prosthesis insertion (range: 0–557 days). Univariable Cox regression analysis showed no change in major complications over time (HR: 0.99 per 1-year increase; 95% CI: 0.96–1.01; $p = 0.21$). Trends were noted for major complications with radiotherapy (HR: 1.60; 95% CI: 1.00–2.55; $p = 0.05$), adenocarcinoma (HR: 0.69; 95% CI: 0.64–1.12; $p = 0.07$), and younger age (HR: 0.99; 95% CI: 0.97–1.00; $p = 0.09$).

Pneumonia was the second most common major complication, with 18 of the 28 patients developing pneumonia within four days of stenting, suggesting aspiration during or immediately after the procedure. Pneumonia occurred more frequently in patients who had received prior chemoradiotherapy (18.1%) than in those who had received no initial therapy, chemotherapy alone, or radiation therapy alone (4.2%, 6.3%, and 5.4%, respectively; $p = 0.01$). The risk was also increased in patients with proximally located stenosis (8.0% vs. 3.2%; $p = 0.001$).

The risk of developing perforation was significantly higher after pre-prosthesis dilation (13.8% vs. 2.3%; $p = 0.04$). Dilation was performed to a median of 12 mm. There was a trend toward more frequent bleeding in distal strictures (9.4% vs. 6.0%; $p = 0.06$). There were 199 (32.8%) minor complications, most related to substernal pain ($n = 280$, 46.1%) (**Figure 4**).

The median time to minor complications was two days after stenting (range: 0–267). Cox regression analysis did not reveal an increase in minor complications over time. Other non-significant pain-related associations were younger age, squamous cell histology, previous distal location, and absence of fistula.

Regarding substernal pain, the univariate logistic regression analysis showed a significant increase in the second period (odds ratio [OR]: 1.07; 95% CI: 1.05–1.95; $p = 0.014$). Therefore, an additional binary multivariable logistic regression analysis was performed, showing that prior

Table 1. Characteristics of patients with esophageal prosthesis due to malignant obstruction

Characteristic		Group 1 (1997–2009) n = 289 (%)	Group 2 (2010–2022) n = 318 (%)	Total n = 607 (%)	p
Age		65.6 ± 11.7	68.2 ± 11.1	66.8 ± 10.2	
Sex	Male	187 (64.7)	212 (66.7)	399 (65.7)	0.611
	Female	102 (35.3)	106 (33.3)	208 (34.3)	
Location	Upper-middle esophagus	87 (30.1)	70 (22.0)	157 (25.9)	0.021
	Distal esophagus-cardias	179 (61.9)	222 (69.8)	401 (66.0)	
	Relapse	23 (8.0)	26 (8.2)	49 (8.1)	
Fistula	Mediastinal	10 (3.5)	12 (3.8)	22 (3.6)	0.965
	Esophageal-respiratory	13 (4.5)	16 (5.0)	29 (4.8)	
	No fistula	266 (92.0)	290 (91.2)	566 (93.3)	
Histology	Squamous cell	116 (40.1)	118 (37.1)	234 (38.6)	0.323
	Adenocarcinoma	158 (54.7)	190 (59.7)	348 (57.3)	
	Other	6 (2.1)	10 (3.2)	16 (2.6)	
	Unknown	9 (3.1)	0	9 (1.5)	
Differentiation	Grade 2	15 (5.2)	18 (5.7)	33 (5.4)	0.268
	Grade 3	181 (62.6)	206 (64.8)	387 (63.8)	
	Grade 4	74 (25.6)	84 (26.4)	158 (27.0)	
	Unknown	19 (6.6)	10 (3.1)	29 (4.8)	
Neoadjuvant	None	167 (57.8)	134 (41.6)	301 (49.6)	< 0.001
	Chemotherapy	50 (17.3)	90 (28.3)	140 (23.1)	
	Radiotherapy	25 (8.7)	34 (10.7)	59 (9.7)	
	Chemo- + radiotherapy	38 (13.1)	52 (17.3)	90 (14.8)	
	Unknown	9 (3.1)	8 (1.1)	17 (2.8)	
Fluoroscopy	Yes	71 (24.6)	48 (15.1)	119 (19.6)	0.006
	No	218 (75.4)	270 (84.9)	488 (80.4)	
Dilatation	Yes	65 (22.5)	43 (13.5)	108 (17.9)	0.002
	No	224 (77.5)	275 (86.5)	499 (82.1)	
Stent type	Fully covered	192 (66.4)	252 (79.2)	444 (73.1)	0.001
	Partially covered	62 (21.5)	48 (15.1)	110 (18.2)	
	Unknown	35 (12.1)	18 (5.7)	53 (8.7)	
Success	Technical	234/246 (95.1)	280/286 (97.9)	514/532 (97.0)	0.95
	Clinical	209/246 (84.9)	252/286 (88.0)	461/532 (87.0)	
	Unknown	43 (14.9)	32 (10.1)	75 (12.0)	

Prepared by the authors.

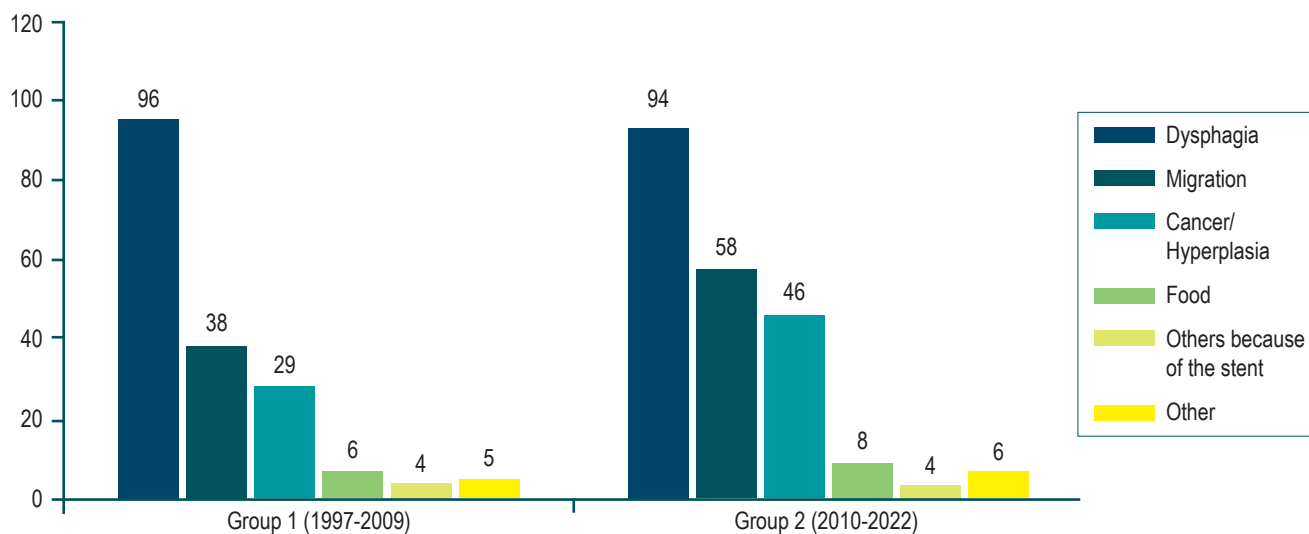


Figure 2. Causes of recurrent dysphagia in the two periods studied. Prepared by the authors.

Table 2. Summary of esophageal stent-related adverse events

Adverse events		Group 1 (1997–2009) n = 289 (%)	Group 2 (2010–2022) n = 318 (%)	Total n = 607 (%)	p
Recurrent dysphagia, in general		96 (33.2)	94 (29.6)	190 (31.3)	0.337
Types	Migration	38 (13.1)	58 (18.2)	96 (15.8)	
	Hyperplasia or cancer	29 (10.0)	46 (14.5)	75 (12.4)	
	Food	6 (2.1)	8 (2.5)	14 (2.3)	
	<i>Other stent-related causes</i>	4 (1.4)	4 (1.3)	8 (1.3)	
	<i>Non-stent-related</i>	5 (1.7)	6 (1.9)	13 (2.1)	
Patients with major complications		41 (14.2)	66 (20.8)	107 (17.6)	0.033
Types	Hemorrhage	21 (7.3)	22 (6.9)	43 (7.1)	
	Pneumonia	12 (4.2)	26 (8.2)	38 (6.2)	
	Perforation	13 (4.5)	2 (0.6)	15 (2.5)	
	Fistula	8 (2.7)	6 (1.9)	14 (2.3)	
	Pressure necrosis	4 (1.4)	3 (1.0)	7 (1.2)	
Patients with minor complications		98 (33.9)	101 (31.8)	199 (32.8)	0.765
Types	Pain	72 (24.9)	108 (33.9)	180 (29.5)	
	Gastroesophageal reflux	55 (19.0)	41 (12.9)	96 (15.8)	
	Fever	15 (5.2)	14 (4.4)	29 (4.8)	
Complicated patients, in general		139 (48.1)	167 (52.5)	306 (50.3)	0.183

Prepared by the authors.

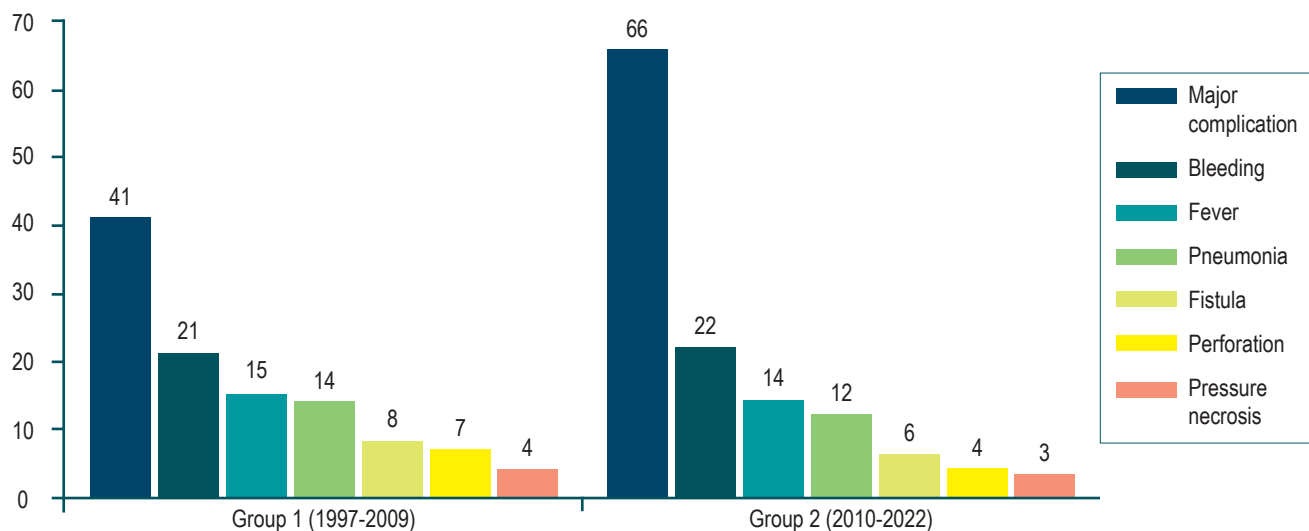


Figure 3. Major complications in the two study periods. Prepared by the authors.

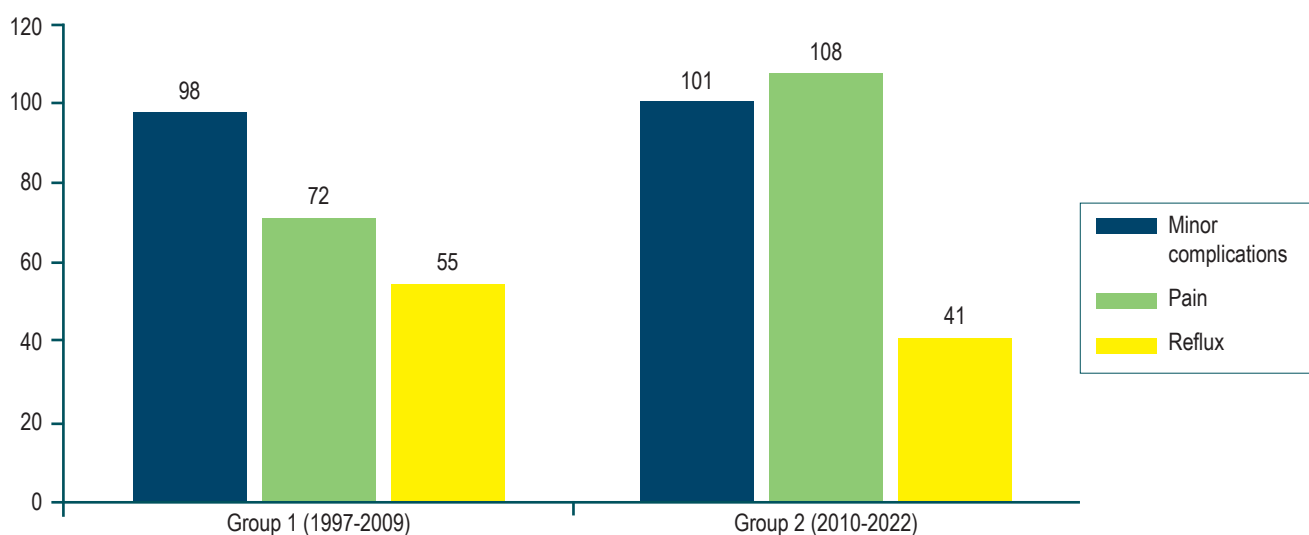


Figure 4. Minor complications in the two study periods. Prepared by the authors.

chemotherapy or radiotherapy and the absence of a fistula were factors significantly associated with pain. In contrast, adenocarcinoma was independently associated with a lower risk.

Reflux, as a minor complication, showed a significant decrease in its manifestation in the second group evaluated (from 19% to 12.9%, $p = 0.048$), which is explained by better patient orientation and formulation of acid blockers always on discharge.

Follow-up and survival

At follow-up, 65 patients (10.7%) needed another procedure to achieve enteral nutrition. This included an endoscopic gastrostomy tube in 44 patients (7.2%), a surgically placed gastrostomy tube in 14 patients (2.3%), and a feeding tube placed by interventional radiology in 7 patients (1.2%).

Median overall survival was 169 days (range: 1–1165). At the end of follow-up, 12 patients (2%) were still alive.

The majority of patients died as a result of tumor progression ($n = 552$; 91%), while 14 patients (2.3%) died due to a stent-related complication. No significant differences in survival were detected between the two groups ($p = 0.07$) (Figure 5).

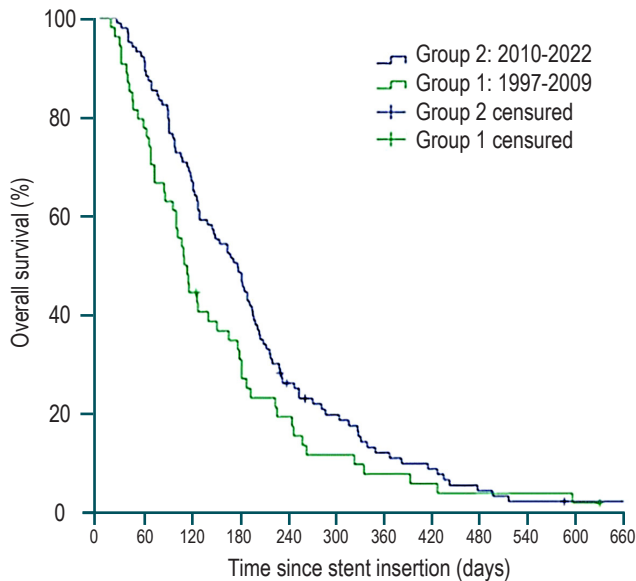


Figure 5. Kaplan-Meier estimate of the overall survival period from stenting. Prepared by the authors.

DISCUSSION

The incidence of esophageal cancer has increased in recent decades. At the same time, endoscopists place an increasing number of esophageal prostheses to palliate malignant obstruction of the esophagus, becoming an effective method to improve dysphagia and the patient's nutritional status and well-being⁽¹⁸⁾. The present study shows a growing increase in the use of esophageal prostheses in various cancer centers over 25 years, providing insight into temporal trends in stenting for malignant esophageal obstruction related to clinical efficacy and safety. A significant technical consideration in the study is the decreased use of fluoroscopy for placement over the years, with good technical and clinical results described in the literature⁽¹⁹⁾. However, with advances in endoprosthesis technology (anti-migration, anti-reflux systems, different coverage, diameters, among others), the rate of complications in their placement remains high, and lasting palliation is not achieved in a high proportion of patients⁽²⁰⁾.

The use of stents is highly effective in resolving dysphagia; still, recurrent dysphagia is common and occurs in 31.3% of patients, mainly due to migration or overgrowth of the tumor or hyperplastic tissue. The overall incidence of recurrent dysphagia has not decreased over the years.

Indeed, there was a trend toward increasing risk over time, primarily due to a significantly increased risk of stent migration, likely related to the increasing use of fully covered prostheses. A wholly covered stent design substantially increases the risk of migration, which can be explained by less adhesion and fixation to the esophageal wall⁽⁸⁾. Furthermore, this fully covered design is more favorable to preventing tumor obstruction or excessive hyperplastic growth⁽²¹⁾. Importantly, our data suggest that the protective effect for tumor or tissue growth outweighs the migration risk because the fully covered design reduces the risk of overall recurrent dysphagia.

Not only recurrent dysphagia but also other adverse events related to prostheses harm patients with already incurable diseases. Complications were observed in almost half of the patients (48.8%), including major complications in 17.6%. We believe that the following findings regarding this topic deserve further attention:

- First, we saw a slight decrease in major complications during the second half of the study, with lower rates of bleeding and perforation. However, there was a gradual increase in the proportion of patients treated for more distally located diseases, and the risk of bleeding tends to be higher in these patients than in those with proximal esophageal obstruction.
- Second, perforation is another devastating iatrogenic complication. We found that the risk of perforation was significantly higher when dilation had been performed to facilitate stenting. This dilation was most commonly performed in the early days of the series and has now been largely abandoned. Current delivery systems are designed to traverse narrow strictures in a nontraumatic manner, avoiding the need for dilation.
- Third, the more significant number of patients treated with chemoradiotherapy before stenting is probably responsible for a greater risk of complications, such as pneumonia in this case, which was more frequent in the second group (4.2% vs. 8.2%, $p = 0.04$). Interestingly, no significant association could be established for chemotherapy or radiotherapy alone. This suggests a cumulative effect of both treatments. Possible mechanisms for increased susceptibility include pulmonary toxicity from chemoradiotherapy leading to decreased respiratory tract clearance, immunosuppressed state, decreased esophageal motility, and the presence of an esophageal-respiratory fistula⁽²²⁾. It is likely that, at least in these cases, procedure-related aspiration has triggered lung infection, emphasizing the importance of close monitoring of the patient during stenting. Nonetheless, considering the lack of alternative palliative measures, we believe that stents can still be recommended to alleviate recurrent malignant dysphagia after chemoradio-

therapy, as supported in recent meta-analyses⁽²³⁾. The relatively high risk of major complications should be discussed with patients as part of obtaining appropriate informed consent.

Migration is known to be a common and bothersome problem in esophageal stents. Migration rates have not improved over time, even with the introduction of new stents. Currently, anti-migration devices, such as endoscopic sutures, or endoclips, such as Stentfix, are alternatives that are emerging to impact migration rates⁽²⁴⁾. Martins et al. point out that migration occurs in up to 36% of cases of esophageal stenting⁽²⁵⁾.

The migration rate increased in the second period evaluated (from 13.1% to 18.2%, $p = 0.113$) without being able to be related to a particular type of stent (fully covered, partially covered, or uncovered), as described in other series⁽²⁶⁾.

Retrosternal pain after stent deployment was the most frequently observed minor complication in our cohort in 29.7% of patients. Several explanations can be proposed: First, during the second period evaluated, a prospective study was carried out, which used a symptom diary to evaluate the experience of pain after esophageal stenting⁽²⁷⁾ extended to stents for malignancy. This triggered more accurate and reliable pain recording compared to assessments during previous years. In our practice, we routinely warn patients about the high likelihood of experiencing pain following esophageal stenting.

Second, more patients were pretreated with chemotherapy or radiotherapy, and this was marked as an independent risk factor for retrosternal pain. The exact mechanism to explain pain after pretreatment is unclear. It is conceivable that chemoradiotherapy-induced fibrosis results in lower esophageal wall compliance with relative overstretch and higher pressures after stent expansion compared with patients not treated with chemoradiotherapy.

During follow-up, 72 patients (11.9%) required other enteral nutrition modes. These results demonstrate that while esophageal stenting can be a valuable tool in alleviating dysphagia, it is not always practical, and patients may experience complications at high rates and may ultimately require an alternative to esophageal prostheses.

We must acknowledge several limitations of our study. Our results are based primarily on retrospectively collected data. Therefore, the occurrence of adverse events could have been underestimated. The sample size remains relatively small, which limits the ability to detect any differences that may exist. Additionally, data were missing on some potentially relevant variables; for example, it would have been interesting to evaluate whether the patient's functional status at follow-up or the stage of the disease has any

influence on the clinical outcome and adverse events. Previous studies have denied such a relationship^(28,29).

Esophageal stenting may allow the introduction of chemoradiotherapy. These therapies allow relief of dysphagia and complete oral nutrition, which is why the European Society of Gastrointestinal Endoscopy recommends their application. However, no clear statement exists on whether they should be introduced before or after stenting⁽³⁰⁾.

Since patients with incurable esophageal cancer have an extremely poor prognosis, the ideal palliative treatment for malignant esophageal strictures should provide rapid and long-lasting relief of symptoms, result in few complications, require a minimal hospital stay, and prolong survival. However, patients who underwent stenting did not often achieve lasting symptom relief due to stent malfunction and had to be readmitted for reoperation. Furthermore, palliation with stents only provides symptom relief but does not prolong survival. Stents with radioactive seed strands have recently been described as combining the advantages of stenting (i.e., faster relief of dysphagia) and brachytherapy (i.e., an advantage in stent patency and survival with a better quality of life)⁽³¹⁾. Zhu et al.⁽³²⁾ proved in a multicenter setting that the placement of esophageal prostheses loaded with I^{125} radioactive seed strands could produce a modest prolongation of survival in patients with incurable esophageal cancer (177 vs. 147 days; $p = 0.005$).

CONCLUSIONS

The present study demonstrates that esophageal prostheses are an alternative to improve the quality of life of cancer patients with symptoms of dysphagia. Still, they are an imperfect tool, which provides incomplete palliation to many patients, leading to thinking that improving the clinical outcome of stent therapy for malignant esophageal disease is challenging. Although new stent designs have been introduced over time, recurrent dysphagia remains a significant problem, occurring in approximately one-third of patients. Furthermore, changes in management strategies, with more patients pretreated with chemoradiotherapy, are associated with an increase in major complications, primarily pneumonia, but also with the development of substernal pain. Fully covered stents are the most popular option, allowing them to be removed if necessary. In this series, stents did not provide a durable source of enteral access in almost 12% of the cohort. Studies are needed to identify which patients will likely experience stent complications or poor palliation to accommodate technological advances better and enhance patient selection for this still-promising technique.

Conflicts of interest

The authors declare no conflict of interest.

Sources of funding

The study was financed with the authors' resources.

Acknowledgments

This study was conducted with the support of the Sustainability Project of the Vice-President's Office for Research of the Universidad de Antioquia, Medellín, Colombia.

REFERENCES

1. WCRF International. Oesophageal Cancer Statistics | World Cancer Research Fund International [Internet]. WCRF International. 2022 [consultado el 16 de julio de 2022]. Disponible en: <https://www.wcrf.org/cancer-trends/oesophageal-cancer-statistics/>
2. Morgan E, Soerjomataram I, Rumgay H, Coleman HG, Thrift AP, Vignat J, et al. The global landscape of esophageal squamous cell carcinoma and esophageal adenocarcinoma incidence and mortality in 2020 and projections to 2040: New estimates from GLOBOCAN 2020. *Gastroenterology*. 2022;163(3):649-658.e2. <https://doi.org/10.1053/j.gastro.2022.05.054>
3. Homs MYV, Steyerberg EW, Eijkenboom WMH, Tilanus HW, Stalpers LJA, Bartelsman JFWM, et al. [Palliative treatment of esophageal cancer with dysphagia: more favourable outcome from single-dose internal brachytherapy than from the placement of a self-expanding stent; a multicenter randomised study]. *Ned Tijdschr Geneeskd*. 2005;149(50):2800-6.
4. Spaander MCW, Baron TH, Siersema PD, Fuccio L, Schumacher B, Escorsell À, et al. Esophageal stenting for benign and malignant disease: European Society of Gastrointestinal Endoscopy (ESGE) Clinical Guideline. *Endoscopy*. 2016;48(10):939-48. <https://doi.org/10.1055/s-0042-114210>
5. Celestin LR. Permanent intubation in inoperable cancer of the oesophagus and cardia: a new tube. *Ann R Coll Surg Engl*. 1959;25(2):165-70.
6. Valbuena JV, Olarte H. Prótesis per oral endoscópica en el tratamiento de cáncer de esófago y cardias. *Rev Col Gastroenterol*. 1987;2(1):17-22.
7. Castaño R, Sanín E, Ruiz MH. Stent esofágico de nitinol en el manejo de las fístulas esofagorrespiratorias malignas. *Rev Col Gastroenterol*. 2003;18(2):78-82.
8. Jackson CE, Johnson LS, Williams DA, Laasch HU, Edwards DW, Harvey AG, et al. A viewpoint on material and design considerations for oesophageal stents with extended lifetime Invited Viewpoint. *J Mater Sci*. 2022;57:3-26. <https://doi.org/10.1007/s10853-021-06700-9>
9. Castaño R. Técnicas en stents gastrointestinales endoscópicos: cómo, cuándo, manejo de complicaciones, selección del stent y costos. *Rev Col Gastroenterol*. 2012;27(1):32-44.
10. Castaño R, Ruiz Vélez MH, Julio Baños F, Sanín Fonnegra E, Álvarez Barrera O, Lopera Bonilla J. Eficacia de un nuevo stent de nitinol fabricado localmente, en el tratamiento de la obstrucción maligna esofágica. *Rev Col Gastroenterol*. 2003;18(4):211-21.
11. Castaño R, Álvarez O, Lopera J, Ruiz MH, Julio F, Sanín E, et al. Endoprótesis metálicas autoexpandibles en la obstrucción maligna esofágica y gastroduodenal. *Rev Col Cirugía*. 2005;20(1):33-48.
12. Castaño R, Álvarez O, Lopera J, Ruiz MH, Rojas A, Álvarez A, et al. Development and implementation of a new nitinol stent design for managing benign stenoses and fistulas of the digestive tract. *Rev Col Gastroenterol*. 2015;30(3):261-72. <https://doi.org/10.22516/25007440.49>
13. Yang Z, Wu Q, Wang F, Ye X, Qi X, Fan D. A Systematic Review and Meta-Analysis of Randomized Trials and Prospective Studies Comparing Covered and Bare Self-Expandable Metal Stents for the Treatment of Malignant Obstruction in the Digestive Tract. *International Journal of Medical Sciences*. 2013;10(7):825-35. <https://doi.org/10.7150/ijms.5969>
14. Hussain Z, Diamantopoulos A, Krokidis M, Katsanos K. Double-layered covered stent for the treatment of malignant oesophageal obstructions: Systematic review and meta-analysis. *World J Gastroenterol*. 2016;22(34):7841-50. <https://doi.org/10.3748/wjg.v22.i34.7841>
15. Law R, Prabhu A, Fujii-Lau L, Shannon C, Singh S. Stent migration following endoscopic suture fixation of esophageal self-expandable metal stents: a systematic review and meta-analysis. *Surg Endosc*. 2018;32(2):675-81. <https://doi.org/10.1007/s00464-017-5720-9>
16. Zhao CL, Gu B, Huo XB, Xia FF. I-125 seed-loaded versus normal stent insertion for obstructive esophageal cancer: a meta-analysis. *Videosurgery and other Miniinvasive Techniques*. 2021;16(4):633-40. <https://doi.org/10.5114/wiitm.2021.104205>
17. Ogilvie AL, Dronfield MW, Ferguson R, Atkinson M. Palliative intubation of oesophagogastric neoplasms at fiberoptic endoscopy. *Gut*. 1982;23(12):1060-7. <https://doi.org/10.1136/gut.23.12.1060>
18. Kumar S, Bahdi F, Emelogu IK, Yu AC, Coronel M, Ge PS, et al. How much progress have we made?: a 20-year experience regarding esophageal stents for the palliation of

- malignant dysphagia. *Dis Esophagus*. 2022;35(6):doab085. <https://doi.org/10.1093/dote/doab085>
19. Chandan S, Mohan BP, Khan SR, Bhogal N, Canakis A, Bilal M, et al. Clinical efficacy and safety of palliative esophageal stenting without fluoroscopy: a systematic review and meta-analysis. *Endosc Int Open* [Internet]. 2020 [consultado el 6 de mayo de 2023];8(7):E944. Disponible en: [/pmc/articles/PMC7297607/](https://pubmed.ncbi.nlm.nih.gov/37138934/)
 20. Moutzoukis M, Argyriou K, Kapsoritakis A, Christodoulou D. Endoscopic luminal stenting: Current applications and future perspectives. *World J Gastrointest Endosc* [Internet]. 2023 [consultado el 6 de mayo de 2023];15(4):195–215. Disponible en: <https://pubmed.ncbi.nlm.nih.gov/37138934/>
 21. Johnson LA, Marino KA, Muesse J. Esophageal Stenting: Expert Techniques. *CTSNet*; 2022. <https://doi.org/10.25373/ctsnet.19224678>
 22. Ivanov AI, Popov VA, Burmistrov MV. Complications of endoscopic esophageal stent implantation. *Kazan Med J*. 2021;102(1):74-84. <https://doi.org/10.17816/KMJ2021-74>
 23. Tinusz B, Soós A, Hegyi P, Sarlós P, Szapáry L, Erős A, et al. Efficacy and safety of stenting and additional oncological treatment versus stenting alone in unresectable esophageal cancer: A meta-analysis and systematic review. *Radiotherapy and Oncology*. 2020;147:169-77. <https://doi.org/10.1016/j.radonc.2020.05.015>
 24. Schiemer M, Bettinger D, Mueller J, Schultheiss M, Schwacha H, Hasselblatt P, et al. Reduction of esophageal stent migration rate with a novel over-the-scope fixation device (with video). *Gastrointest Endosc*. 2022;96(1):1-8. <https://doi.org/10.1016/j.gie.2022.02.001>
 25. Martins B da C, Retes FA, Medrado BF, de Lima MS, Pennacchi CMPS, Kawaguti FS, et al. Endoscopic management and prevention of migrated esophageal stents. *World J Gastrointest Endosc*. 2014;6(2):49-54. <https://doi.org/10.4253/wjge.v6.i2.49>
 26. Reijm AN, Didden P, Bruno MJ, Spaander MCW. Early pain detection and management after esophageal metal stent placement in incurable cancer patients: A prospective observational cohort study. *Endosc Int Open*. 2016;04(08):E890-4. <https://doi.org/10.1055/s-0042-111202>
 27. Castaño R, Álvarez O, Lopera J, Ruiz MH, Rojas A, Álvarez A, et al. Desarrollo e implementación de un nuevo diseño de stent de nitinol para el manejo de estenosis y fistulas benignas del tracto digestivo. *Rev Colomb Gastroenterol*. 2015;30(3):261-72. <https://doi.org/10.22516/25007440.49>
 28. Fuccio L, Scagliarini M, Frazzoni L, Battaglia G. Development of a prediction model of adverse events after stent placement for esophageal cancer. *Gastrointest Endosc*. 2016;83(4):746-52. <https://doi.org/10.1016/j.gie.2015.08.047>
 29. Gao F, Xu YL, Liu YJ, Sun MH. Outcomes of self-expandable metal stent placement for malignant oesophageal strictures. *Clin Radiol*. 2020;75(2):156.e21-156.e27. <https://doi.org/10.1016/j.crad.2019.10.008>
 30. Spaander MCW, van der Bogt RD, Baron TH, Albers D, Blero D, de Ceglie A, et al. Esophageal stenting for benign and malignant disease: European Society of Gastrointestinal Endoscopy (ESGE) Guideline - Update 2021. *Endoscopy*. 2021;53(7):751-762. <https://doi.org/10.1055/a-1475-0063>
 31. Yang ZM, Geng HT, Wu H. Radioactive Stent for Malignant Esophageal Obstruction: A Meta-Analysis of Randomized Controlled Trials. *J Laparoendosc Adv Surg Tech A* [Internet]. 2021 [consultado el 14 de diciembre de 2023];31(7):783–9. Available from: <https://pubmed.ncbi.nlm.nih.gov/32915105/>
 32. Zhu HD, Guo JH, Mao AW, Lv WF, Ji JS, Wang WH, et al. Conventional stents versus stents loaded with (125) iodine seeds for the treatment of unresectable oesophageal cancer: a multicentre, randomised phase 3 trial. *Lancet Oncol* [Internet]. 2014 [consultado el 14 de diciembre de 2023];15(6):612–9. Available from: <https://pubmed.ncbi.nlm.nih.gov/24742740/>